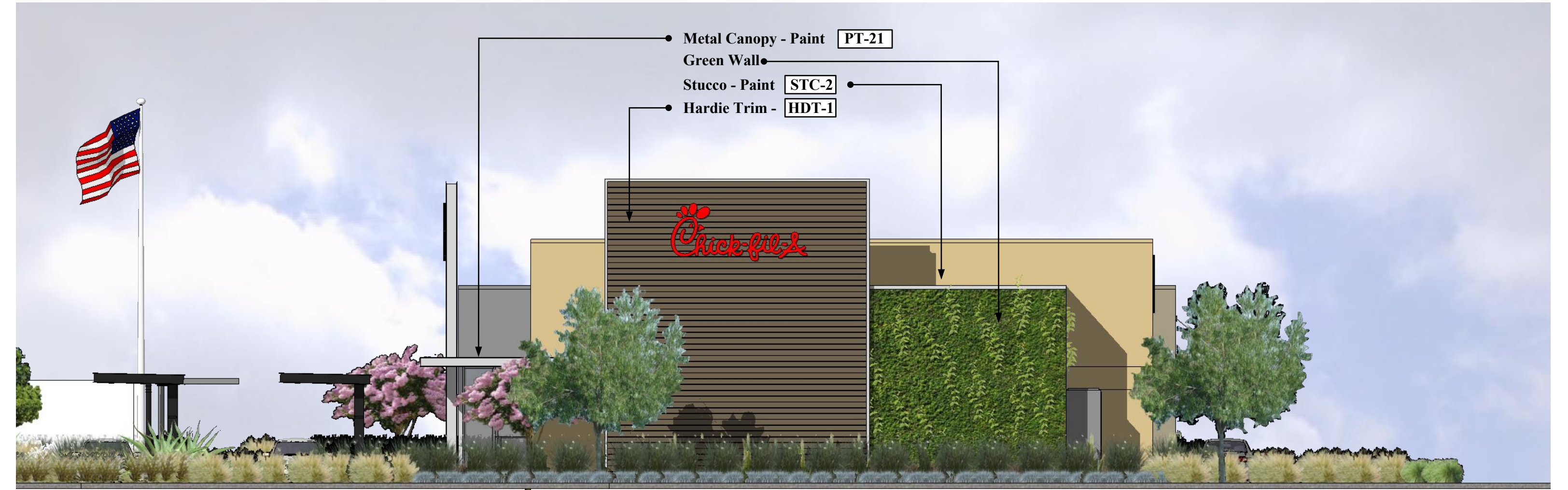




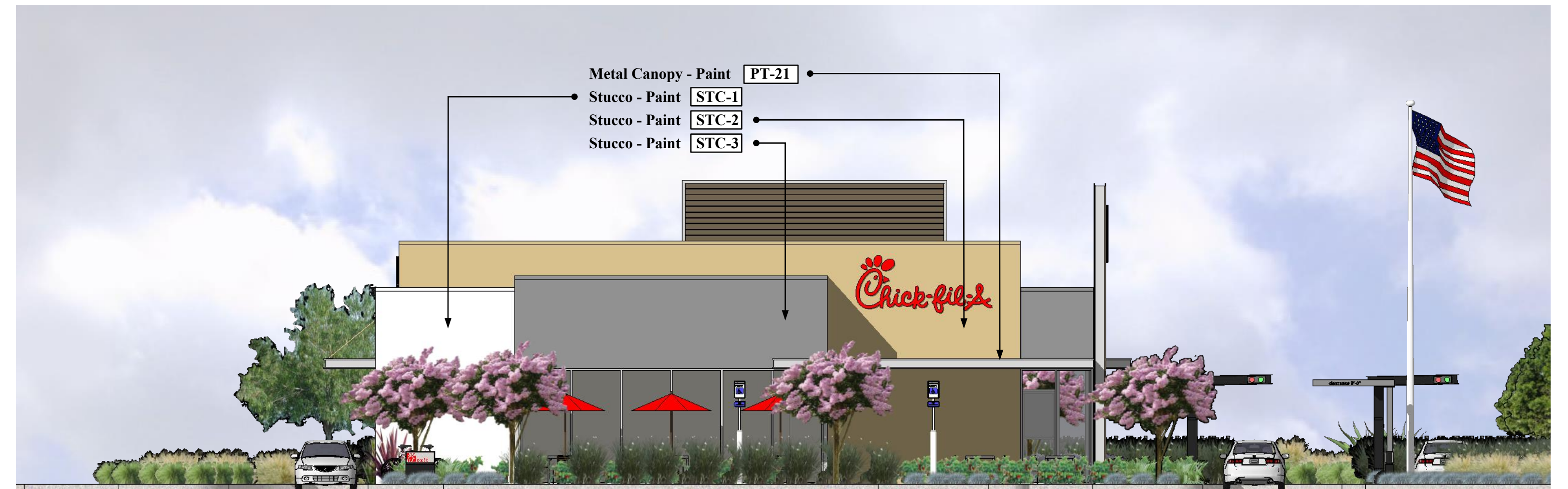
WEST ELEVATION



SOUTH ELEVATION



EAST ELEVATION



NORTH ELEVATION



PRELIMINARY ELEVATIONS
West Hills, CA

File Name: 14-145 Color Elevations

03-03-16
update 03-08-16
update 04-14-16
update 05-27-16

Note:
All roof top mechanical equipment shall be located in equipment well and screened from view by parapet walls.

COLOR AND MATERIAL LEGEND

- STC-1 Sherwin Williams - SW7541 "Grecian Ivory"
- STC-2 Sherwin Williams - SW7549 "Studio Taupe"
- STC-3 Sherwin Williams - SW7068 "Grizzle Gray"
- PT-21 Paint - to match Precision Coatings - #2280 "Silver Mist"
- HDT-1 Hardie Trim - James Hardie - 4/4 Smooth NT3 "Timber Bark"



C · R · H · O

Architecture Interiors Planning

195 South "C" Street Suite 200

Tustin, California 92780

714 832 1834

FAX 714 832 1910



NORTHEAST VIEW



PRELIMINARY ELEVATIONS
West Hills, CA

File Name: 14-145 Color Elevations

03-03-16
update 03-08-16
update 04-14-16
update 05-27-16

C · R · H · O

Architecture Interiors Planning

195 South "C" Street Suite 200

Tustin, California 92780

714 832 1834

FAX 714 832 1910



NORTHWEST VIEW



PRELIMINARY ELEVATIONS
West Hills, CA

File Name: 14-145 Color Elevations

03-03-16
update 03-08-16
update 04-14-16
update 05-27-16

C · R · H · O

Architecture Interiors Planning

195 South "C" Street Suite 200

Tustin, California 92780

714 832 1834

FAX 714 832 1910



SOUTHEAST VIEW



PRELIMINARY ELEVATIONS
West Hills, CA

File Name: 14-145 Color Elevations

03-03-16
update 03-08-16
update 04-14-16
update 05-27-16

C · R · H · O

Architecture Interiors Planning

195 South "C" Street Suite 200

Tustin, California 92780

714 832 1834

FAX 714 832 1910



SOUTHWEST VIEW



PRELIMINARY ELEVATIONS
West Hills, CA

File Name: 14-145 Color Elevations

03-03-16
update 03-08-16
update 04-14-16
update 05-27-16

C · R · H · O

Architecture Interiors Planning

195 South "C" Street Suite 200

Tustin, California 92780

714 832 1834

FAX 714 832 1910